

## ND50JT

I'm pleased to announce, for my 50<sup>th</sup> birthday, a jubilee tournament. The theme goes as follows:

### **Proof games showing echoes between black and white promoted pieces.**

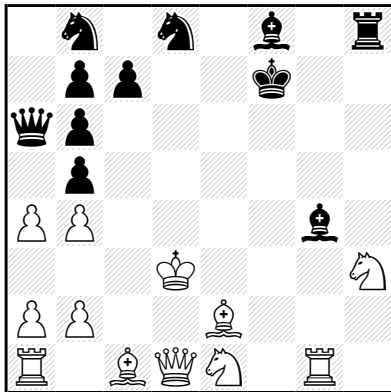
Each entry can be orthodox or fairy, with only one fairy condition but no fairy piece allowed. Multi-solutions and twins are accepted. They have to be sent before **31/08/2012** to the following mail address of my friend Alain Villeneuve, who kindly accepted to make them anonymous before sending them to me:

**Marquisfi(at)wanadoo.fr**

The term "echo" has to be taken in a broad sense, it means that something "similar" occurs between the black and white promotions. This echo can be of various types, e.g. between the natures of the involved pieces, the themes they performed, their moves, their final destination square (figurative echo), etc. The quality and the richness of those echoes will be my main criterion for ranking the entries.

### **Illustrative example 1 :**

**Michel CAILLAUD**  
**dédié à A. Frolkin et G. Wilts**  
**Europe Echecs 1994**



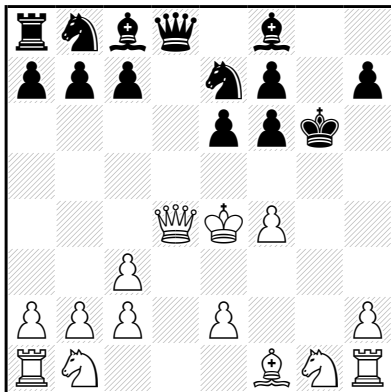
Partie justificative en 32,5 coups (12+11) C+

1.h4 é5 2.h5 é4 3.h6 é3 4.h×g7 h5 5.g4 h4 6.g5 h3 7.g6 h2 8.Ch3 Ch6 9.Tg1 h1=D  
10.g8=C Dç6 11.Cé7 Dç3 12.Cç6 d×ç6 13.g7 Fg4 14.g8=D f5 15.Db3 Ddd3 16.Db6  
a×b6 17.d×ç3 Ta4 18.Cd2 Da6 19.Cf3 é×f2+ 20.Rd2 Cf7 21.é4 Cd8 22.Fé2 f1=T  
23.Cé1 Tf4 24.é5 Tfb4 25.é6 f4 26.é7 Rf7 27.é8=T f3 28.Té5 f2 29.Tb5 f1=C+  
30.Rd3 Cd2 31.ç×b4 Cb3 32.ç×b3 ç×b5 33.b×a4

The thematic echo of this famous proof game is concentrated around promoted pieces' natures and the themes they performed: three Ceriani-Frolkin by each side, each time with configuration (Q,R,S).

**Illustrative example 2 :**

**Satoshi HASHIMOTO  
Problem Paradise 2000  
1° Prix**



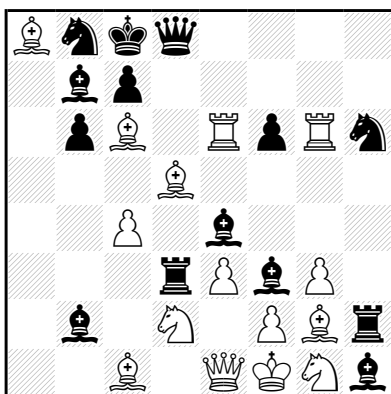
Partie justificative en 15,0 coups (14+14) C+

1.g4 é6 2.g5 Fb4 3.g6 Fç3 4.d×ç3 Cé7 5.Fg5 0-0 6.Ff6 g×f6 7.g7 d5 8.g×f8=F d4 9.Fh6 d3  
10.Fç1 Rg7 11.Rd2 Rg6 12.Ré3 d2 13.Ré4 d×ç1=F 14.Dd4 Fh6 15.f4 Ff8

Each side performs a Pronkin Bishop, hence two thematic echoes (same theme and same piece's nature). Moreover the moves of the two promotions, Bf8-h6-c1 and Bc1-h6-f8, are in reverse order, hence showing a third, and deep, thematic echo.

**Illustrative example 3 :**

**Unto HEINONEN  
dédié à M. Caillaud  
Problembiad 2000**



Partie justificative en 28,0 coups (15+14) C+

1.h4 a5 2.h5 a4 3.h6 a3 4.h×g7 a×b2 5.Th6 Ta3 6.Tg6 h5 7.d4 h4 8.d5 h3 9.d6 h2  
10.d×é7 d5 11.g3 d4 12.Fg2 d3 13.Rf1 d2 14.Dé1 d1=F 15.Cd2 b1=F 16.ç4 Fé4  
17.é3 Td3 18.a4 h1=F 19.a5 Th2 20.a6 Ch6 21.g8=F Fg7 22.a7 Fb2 23.Taa6 f6  
24.Fd5 Rd7 25.Té6 b6 26.a8=F Fb7 27.é8=F+ Rç8 28.Féç6 Fdf3

The thematic echoes concern here the nature of the promoted pieces (three Bishops by each side) together with their final destination squares (figurative echo).

Have great fun composing!

Nicolas Dupont.